

IN THIS ISSUE:

uCOVER STORY

Public Hearing

uPAGE 2

STEM

53206 Drug Free

uPAGE 3

Auer Avenue

Dominican Center– Lead

uPAGE 4

Community Happenings

Ethel Nuttis Gill FRC

Children’s Hospital of WI

AMANI United

Issue 20: October 2018

COMMUNITY NEWSLETTER



COMMUNITY UNITES FOR PUBLIC HEARING



Potential closure of the S&S Liquor Store on 27th and Auer presented a ray of sunlight for Amani residents and community organizers. The united cause was against the store’s license renewal and the alleged illegal behavior associated with the establishment.

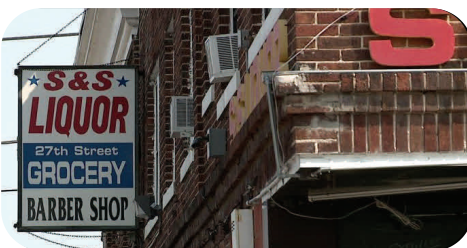
On July, 17th, a public hearing was held at City Hall for the store’s liquor license renewal application. COA Youth & Family Centers and other community organizers provided transportation.

Milwaukee Common Council listened to testimony against and support for S&S’s liquor license renewal. According to 53206 Drug Free Communities Group, *the Common Council voted 14-0 not to renew the license.*

This was largely due to the strong efforts of residents, community organizations, the Milwaukee Police Department, and the Alderman. “We were successful in going to license hearings to voice resident concerns and it worked in our favor,,” said Barbara Smith of Dominican Center.

Most Recently, S&S Liquor Store has filed a lawsuit against the city of Milwaukee that has extended the timeline for a decision regarding their liquor license renewal. Until the court decides S & S will still be able to operate and maintain their liquor license.

Milton Byers, Community Organizer in District 5 of Safe & Sound said, “I hope the city sees that the community is really adamant about it being closed.”



Barbara Smith, President, Amani United
John Eshun, Community Advocates

Amani United News Contributing Board

Destinny Fletcher
Children's Hospital of Wisconsin

David White
Operations Manager
COA Goldin Center

Barbara Smith
President, Amani United

Nicole Franklin
Community Engagement Coordinator
COA Goldin Center

Michelle Allison
Community School Coordinator
United Way of Greater Milwaukee

Britney Roberson
Amani BCJI Coordinator
Dominican Center for Women

Hope Reed-Johnson
Associate Education Director
Milwaukee Repertory Theater

Tom Schneider
Executive Director
COA Youth & Family Centers

Joe Trevino
Associate Director
COA Youth & Family Centers

Zuwena Cotton
Co-Director
NOVA High School

Sasha Fernandez
Family Resource Center Director
COA Youth and Family Centers

Sister Patricia Rodgers
Executive Director
Dominican Center for Women

Partner Organizations

Amani United
Brighter Futures
Children's Hospital of Wisconsin
COA Youth & Family Centers
Dominican Center for Women
Marquette University
Medical College of Wisconsin
Northwestern Mutual
Safe & Sound
United Neighborhood Centers of Milwaukee

Edited & Published by
COA Youth & Family Centers
www.coa-yfc.org



The Kohl's Explore Your Future program is a STEM education program unique to COA Youth & Family Centers. Thanks to a grant from Kohl's Cares, there are weekly STEM sessions at COA's two COA centers and at COA's seven MPS Community Learning Centers, as well as other events such as three annual STEM expos, field trips, and a STEM camp at our very own Camp Helen Brachman!

At the COA Goldin Center in Amani, weekly STEM sessions are held with youth ages 6-18. These sessions feature topics like engineering, chemistry, coding, art, and robotics. Some of the fun activities include making rockets, towers, and prosthetic hands, coding with Ozobots, and watching chemical reactions.

Goldin Center staff Ashley Shackelford said, "Youth have benefited from STEM because it is hands-on, focused on various subjects, and helps them to use critical thinking."

The Keefe Ave, Hopkins-Lloyd, and Auer Ave after school programs also have COA STEM programs in 53206. For more details contact COA STEM Coordinator Lina Nguyen at 414-265-7698 .



The 53206 Drug-Free Communities project is assisting community organizations in and around 53206 to better help families in the Amani neighborhood. We are one of many partners in the Amani Revitalization Plan working toward neighborhood safety, housing, employment, education, and family well-being. The 53206 Drug-Free Communities project knows that partnering with local organizations is the best way to prevent youth drug use, and drug prevention involves the entire community. We are a member of the Milwaukee County Substance Abuse Prevention Coalition (MCSAP) and are housed in Community Advocates Public Policy Institute.

What the 53206 DFC does:

- ⇒ Offers training opportunities to residents, youth, and community partners
- ⇒ Provides assistance to the Amani Revitalization Plan
- ⇒ Promotes a drug-free environment in the Amani neighborhood
- ⇒ Partners with local organizations on special events
- ⇒ Informs parents and youth on how they can reduce youth drug use.

For more information contact John Eshun: jeshun@communityadvocates.net 414-270-4659

Join the Auer Avenue Community School Leadership Team

Attention Amani residents and business partners: **Your voice is needed!** Auer’s Community School Leadership Team (CSLT) includes educators, families, residents, students, partner organizations, local businesses and others invested in our community. We have monthly meetings where we get updates from the staff about school information and help align the work of partners with our school’s School Improvement Plan to ensure every student is successful.

Advantages of CSLT:

- Offers diverse perspectives on program planning and school wide decisions
- Members build relationships between different groups and learn about what different partners offer in the school
- A wide range of issues can be addressed
- Ensures collaboration and working towards shared goals

Common roles for CSLT Committees include:

- Suggesting ways to improve the delivery of services to your target audience
- Identifying community needs and resources
- Contributing to project planning and problem solving
- Helping staff connect with partners and community members
- Talking with community members and agencies about getting involved with school



Auer Avenue’s Community School Leadership Team will meet once every month from 9:00 am – 11:00 am. This school year’s meeting dates are to be determined.

For information or questions, contact Ms. Allison at (414) 875-4636.

Working Towards a Lead Free Amani

Many neighborhoods in the City of Milwaukee are at risk for lead poisoning, and Amani is no exception. The Dominican Center has joined Hunger Task Force’s *Well Fed Means Less Lead* (WFMLL) campaign to provide door-to-door education on lead exposure and prevention in water, paint, and soil. In just two months, four canvassers have had more than 800 conversations about lead prevention in Amani. The WFMLL canvassers are Amani residents, so each conversation provides an opportunity to build community and connect with neighbors in addition to providing resources. A special thank you to the canvassers: Marsha, Orean, Javon, and Meloney for their passion and commitment to Amani’s health and well-being.

Nutrition plays an important role in protection from lead poisoning.

Visit www.getwellfed.org and www.dominican-center.org for information on how to protect yourself and family.

Alisha Klapps Balistreri - Communications Specialist - Dominican Center



Get Involved - *Amani Community Happenings* - Welcome

October

Oct 1: 4 PM - Amani United Safety Committee - First Monday Meeting - COA Goldin Center - 2320 W. Burleigh
Oct 6: 8:30AM - Amani First Saturday Meeting - Dominican Center - 2470 W. Locust
Oct 19: 4:30 - 6:30 PM - Community Fun Night - COA Goldin Center
Oct 23: 4:30PM - Amani United Meeting (4th Tuesday) - COA Goldin/NOVA Library - 2320 W. Burleigh
Oct 27 - The Komen Corner: Healthy Lifestyles Fitness Class - COA Goldin
Every Wednesday 4-6 PM - COA Food Pantry - COA Goldin - 2320 W. Burleigh

November

Nov 3: 8:30AM - Amani First Saturday Meeting - Dominican Center - 2470 W. Locust
Nov 5: 4 PM - Amani Safety First Monday Meeting - COA Goldin/NOVA Library - 2320 W. Burleigh
Nov 8: 4 - 6 PM - STEM Day Expo—COA Goldin Center- 2320 W. Burleigh
Nov 27: 4:30 PM - Amani United Meeting (4th Tuesday) - COA Goldin/NOVA Library - 2320 W. Burleigh
Every Wednesday: 4-6 PM - COA Food Pantry - COA Goldin Center - 2320 W. Burleigh

December

Dec 1: 8:30AM - Amani First Saturday Meeting - Dominican Center - 2470 W. Locust
Dec 3: 4 PM - Amani Safety First Monday Meeting - COA Goldin/NOVA Library - 2320 W. Burleigh
Dec 7: Community Fun Night - Milwaukee Repertory Theater Christmas Carol Performance Night
Dec 18: 4:30 PM - Amani United Meeting (4th Tuesday) - COA Goldin/NOVA Library - 2320 W. Burleigh

The Ethel Nutis Gill Family Resource Center

The Family Resource center, located inside the COA Goldin Center, provides support to parents and children, and strengthens families. Through quality programming families come together, have fun, and gain the skills and tools to reach their greatest potential. Check out these opportunities to get involved:

Daily Drop-In Programing (just show up):

- Every Monday - Thursday from 10 AM -2 pm
- Access to an free playtime for parents/caregivers and their children.

Fathers Empower MKE:

- Every Thursday, starting October 11
- A fatherhood support group designed to empower men to overcome barriers to success.

Goldin Jewels:

- Tuesdays & Fridays, 10 am -12 pm
- A community senior support group that gathers for fun-filled arts & crafts, projects, games, outings, and exercise activities!

**Contact COA's Family Resource Center Program
Coordinator, Brooks Griffin:**

bgriffin@coa-yfc.org or 414-265-7689



Kids deserve the best.

As we approach the end of the year, we tend to limit our visits to the doctor's office due to our busy schedules. However, the fall season is here, and so is the season for influenza (also known as the Flu). At Children's Hospital of Wisconsin, we highly recommend families become aware of the dangers that come with Flu season. **Make sure that you and your family receive your annual flu shot to prevent any contagious sickness.** We wouldn't want you to miss out on all the fall fun!

Please notify your primary physician or nurse practitioner if you have any questions/concerns or if you're experiencing any symptoms that affect your health. **Flu symptoms may include:**

- Fever or feeling feverish/chills
- Cough
- Sore throat
- Runny or stuffy nose
- Muscle or body aches
- Headaches
- Sudden or Excessive Fatigue (tiredness)
- Nausea and/or vomiting

Contact: Destinny Fletcher
Community Health Navigator
Children's Hospital of Wisconsin
Phone: 414-239-0904
Office: 414-449-1757 Ext. 3125
Email: dfletcher@chw.org